

*The Office of Student Professional Development & Employer Services
of the Student Personnel Services Department
presents...*

**Dress for Success:
A Professional Wardrobe**





Campus fashions and work fashions

are two different worlds.

NO jeans **NO** flip-flops **NO** sneakers **NO** visible undergarments

NO short skirts **NO** pants that are too tight or too low

NO exposed cleavage or bellies



Professional Attire

*** Image is everything.**

*** Look neat and appropriate.**

*** You may want to invest in one or two high quality suits for interviewing. (You can also use them for meetings on-the-job.)**

*** Learn to use what you have in your closet to mix and match for on-the-job attire. (Your own wardrobe can be organized to maximize your investment.)**

*** It's always worth it to have your favorite suit dry cleaned and to polish your shoes.**

*** Nail care is important --nails should look clean.**

*** Minimal cologne or perfume and make-up.**

*** Empty pockets--no bulges or tinkling coins.**

*** Visible piercings may be controversial.**

Earrings should not be distracting.

INTERVIEW ATTIRE:



Shirts

- *Styles should be conservative (such as the white or blue button-down collar type**
- *Creative fields are open to a wider variety of styles.**

Shoes

- *Dark color, black most common and conservative styles**

Socks

- *Dark color, black is the most common**
- *Hosiery at or near skin color (and no runs)**

Briefcases

- *Clutch / handle / strap (or a portfolio case)**

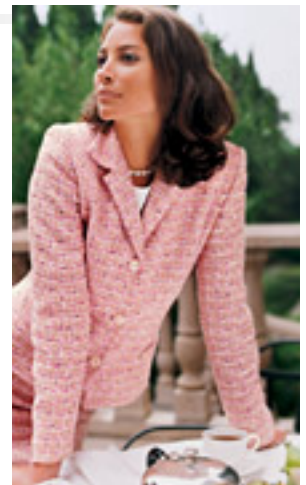
Ties

- *Patterns or solids, conservative styles, silk is preferred by many**
- *Watch excessive jewelry**
- *You might want to think about getting your hair cut (or styled)**
- *Beards and mustaches can be controversial.**
- *Excessive earrings may not be appropriate.**

***Wear conservative styles and colors
(depending upon the industry).**

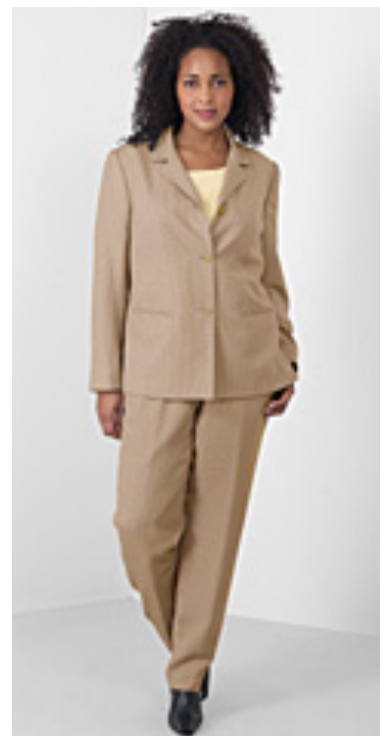
*** The fabric quality is important.**

***Color is still the foundation to every wardrobe.**



Suits

- * Skirt suits can be appropriate for interviews.
- * Pant suits are also appropriate interviews and most work environments.



Suits & sports jackets

Dark colors and conservative styles are preferred for most industries.



COLORS: 



ACCESSORIES

***Dark/neutral colors are usually recommended.**



Looking Great Is Easy!



- **Open-toe sandals are not recommended.**
- **Shoes should not have heels that are too high.**

